

top of the world

Bold graphic elements with pops of color elevate this 40th floor Jersey City apartment's feel.

Written by
Brian Scott Lipton
Design by
Ron Nathan
Photography by
Mike VanTassell

Most of this Jersey City apartment was decorated in the couple's longtime favorite color scheme, black and white, but they allowed designer Ron Nathan to add red to the décor in some of the accent pieces found in the kitchen and living room.



When longtime clients of Wyckoff-based interior designer Ron Nathan offered him the opportunity to design their new pied-à-terre, an 1,800-square-foot one-bedroom on the 40th floor of a luxury building in Jersey City's Exchange Place area, he didn't have to think very hard before agreeing to the project.

"The nicest people to work with are the people you have worked with before, because their confidence in you makes it easier to do your best," says Nathan, who has teamed up with the senior couple on four previous occasions. "I love the fact that they're always very collaborative but also have a real sense of what they want."

The project took Nathan and his team about eight months to complete, as they needed to gut the apartment and reconfigure parts of the existing floor plan to take maximum advantage of the space, as well as the beautiful views of the city. "I think the hardest part of the job was coordinating all the tradespeople. There had to be a very specific flow to the job, and I had to be very careful about how everything was designed," says Nathan.

One of Nathan's first decisions was to create an open kitchen, which meant eliminating part of a wall, adding custom-built cabinetry and replacing the apartment's wooden floors with Porcelanosa tiles

The designer found an ingenious solution for a structural column that could not be removed from the middle of the living room; he covered it in red grass-cloth and let it house a television and electronic fireplace.



(which are visible in every room but the bedroom). “They have tile floors in their main residence in Florida, so they wanted something similar here,” he notes. “Plus, tile is easy to clean, and we wanted everything in the apartment to be low maintenance.”

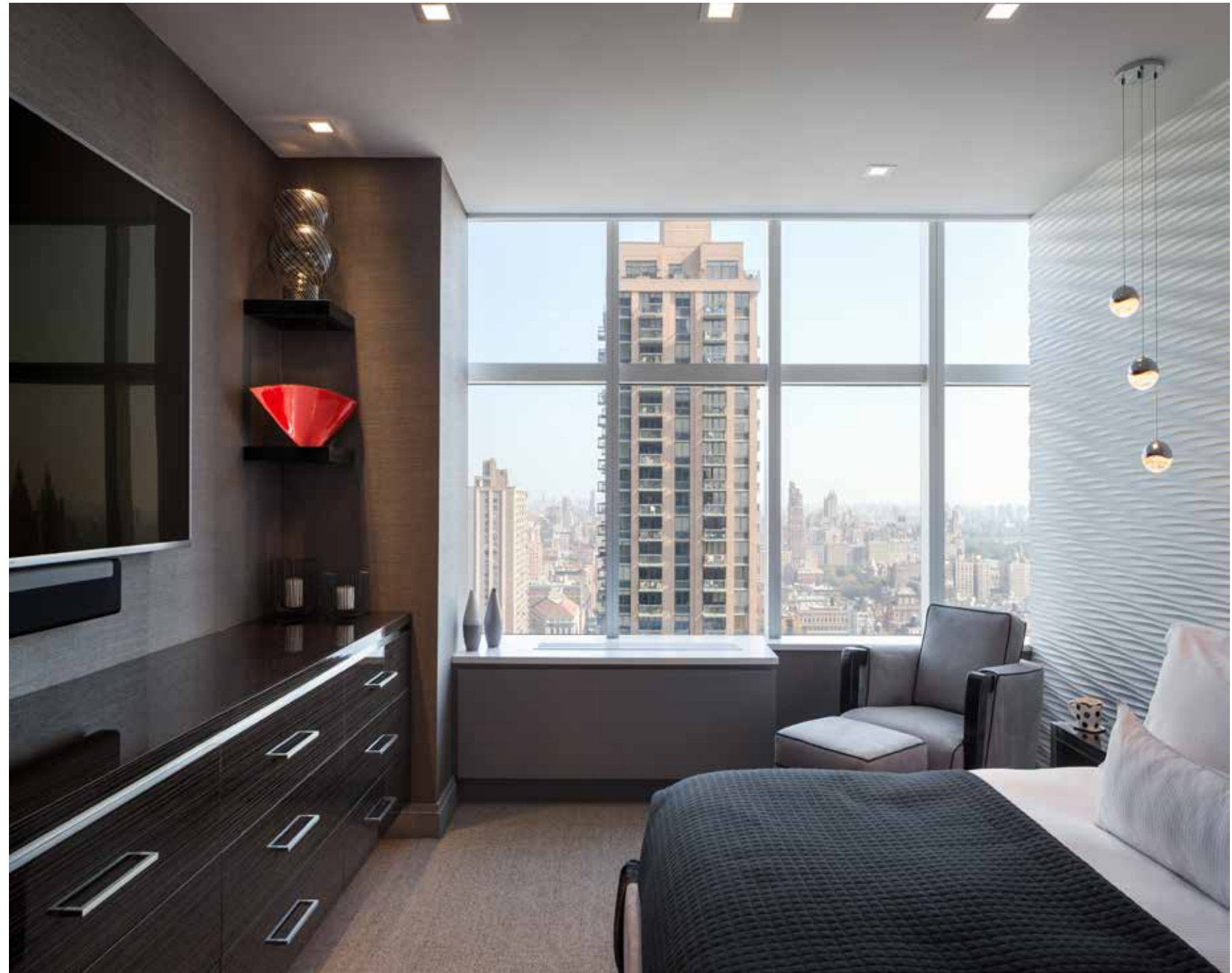
The kitchen also includes a small island that provides space for the couple to eat, with two breakfast barstools by Vanguard. Because they don’t plan to entertain often, the couple saw no need to incorporate a formal dining table. The island unit, covered in white lacquer with a white quartz countertop, is equipped with a wine refrigerator, icemaker, dishwasher and cooktop with a small oven underneath, while a large

Sub-Zero refrigerator is located nearby, hidden behind cabinetry that blends into the surroundings.

Similarly, the living room is designed primarily for the couple’s use, with a black-and-white upholstered sofa and two swivel chairs by Swaim Furniture, all of which are positioned to take advantage of the apartment’s views. The room also gets a great deal of natural light, says Nathan, and remote-controlled window shades by CMI Interiors regulate how much sun is allowed into the apartment at any time.

Perhaps the living room’s most unusual feature is a red grass-cloth-covered column by Phillip Jeffries that houses both a television set and an

The homeowners aren’t overly concerned with hosting dinner parties, so Nathan hid many smaller appliances beneath a white quartz counter on a kitchen island, which doubles as a place to eat.



electric fireplace. “It was a structural column, so we couldn’t take it down or replace it,” admits Nathan. “This is the first time my clients have allowed me to use red as an accent color; all my other work for them has been completely black and white.” Finally, a custom-shaped wool rug by Prestige Mills completes the sophisticated look.

To make a restful night’s sleep, Nathan put a great deal of effort into creating a perfect master bedroom, which features a king-sized bed with an upholstered headboard, a custom-made dresser in charcoal anigre wood with stainless steel, a swivel chair, distinctive light fixtures by Sonneman throughout the room and a 70-inch television. It is also the only space in the

apartment that has wall-to-wall carpeting, per the clients’ request.

Meanwhile, the bathroom—which is separated from the bedroom by a pocket door—looks vastly different than it did before. “There was a bathtub where the custom-made vanity is now, but we decided to eliminate it and just enlarge the shower,” says Nathan. The walls are now completely tiled, as is the floor, and a large wooden mirror with built-in sconces is both useful and decorative.

“I loved the fact that I was able not only to make a huge difference in the way the space looked, but I was also able to provide my clients with a comfortable place for them to spend time in,” says Nathan.

Having a variety of lighting options in the bedroom and bathroom was important to the homeowners, so Nathan installed everything from hanging lamps above the king-sized bed to a large mirror with sconces built into it.